

R
A
G
D
O
L
L

Ragdoll Breed Seminar



Produced and approved by the
TICA Ragdoll Breed Committee

December 1, 2014

Photo credits:

Chanan, Helmi, Brianne DeFoe, Olek Kuperberg, Larry Johnson, Audra Mitchell, Preston Smith

R A G D O L L

General Description



- ❖ The Ragdoll is a semi-long haired, blue-eyed pointed cat with a sweet personality.
- ❖ The Ragdoll grows large and heavy, but is slow to mature and may not reach full weight and size for four years.
- ❖ Full color is not reached until 3 years old.
- ❖ The Ragdoll is muscular with little fat except on the lower abdomen fatty pad.
- ❖ ALLOWANCES: Seasonal changes in coat.



History

RAGDOLL

- ❖ Ann Baker of Riverside, California developed the Ragdoll breed in the early 1960's.
- ❖ A pure white Angora cat, Josephine, a Seal Point Mitted type male, Daddy Warbucks, and a black cat, Blackie, believed to be of domestic cat descent were used to create the Ragdoll breed.
- ❖ Ann insisted Josephine's genes were altered after being hit by a car as her kittens born after the accident had interactive, loving personalities and would go limp in your arms, earning the "Ragdoll" name.
- ❖ Denny & Laura Dayton went on to play a major role in the successful development of the Ragdoll breed recognized today.



Ann Baker, Fiki, Kyoto



The Daytons with Floppy, Phil and Loveable

Personality

RAGDOLL

- ❖ The Ragdoll is bred for its personality, they are relaxed, generally happy, many going limp in your arms and flopping like a stuffed Ragdoll, their namesake.
- ❖ Ragdolls are outgoing cats, with a loving nature and laidback disposition.
- ❖ Ragdolls are known for their tolerant attitudes with other animals and children.
- ❖ Ragdolls are social cats and love to play.
- ❖ Ragdolls are often compared to dogs because of their friendliness, intelligence and loyal character, often successfully taught to play fetch.



Ragdoll Traits

R
A
G
D
O
L
L

- ❖ Ragdolls take up to 4 years to reach full maturity with males weighing between 15-20lbs, and females 10-15lbs on average.
- ❖ Ragdolls are a pointed breed, therefore they always have blue eyes.
- ❖ Ragdolls come in three patterns: Colorpoint, Mitted, and Bicolor.
- ❖ Note to Judges: It's important to judge a Ragdoll on how they meet the standard on a given day. No allowances should be given to how things "might" mature. Maturity of certain traits vary greatly depending on individual lines.



Ragdoll (RD) Standard - Points

R
A
G
D
O
L
L

Head

40 points

Shape	9
Ears	5
Eyes	7
Chin	5
Muzzle	4
Profile	9
Neck	1

Body

35 points

Torso	8
Legs/Feet	5
Tail	4
Boning	10
Musculature	8

Coat/Color/Pattern

25 points

Length	4
Texture	8
Pattern	6
Color	7

Points in Order of Importance

R
A
G
D
O
L
L

- Boning 10
- Head Shape 9
- Profile 9
- Torso 8
- Musculature 8
- Coat Texture 8
- Eyes 7
- Coat Color 7
- Pattern 6
- Ears 5
- Chin 5
- Legs/Feet 5
- Muzzle 4
- Tail 4
- Coat Length 4
- Neck 1



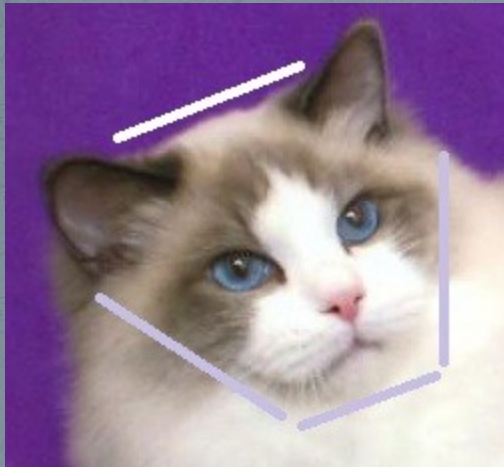
R A G D O L L

Category/Divisions/Colors

- Category:
 - ❖ Pointed
- Divisions:
 - ❖ Solid Point, Tortie Point, Tabby Point
 - ❖ Solid/White, Tortie/White, Tabby/White (mited and bicolor pattern ONLY)
- Colors:
 - ❖ All Pointed Colors
- Permissible Outcrosses:
 - ❖ None

Head: Shape – 9 points

- Broad, modified wedge, with slightly rounded contours
- Appearance of a flat plane in the area between the ears
- Skull medium in size



R A G D O L L

Head: Ears – 5 points

- Medium in size
- Broad at base



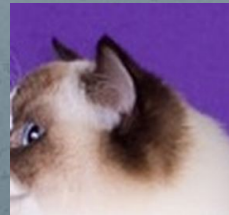
- Rounded tip



- Set as much on the top of the head as on the side....



- Slightly tilted forward

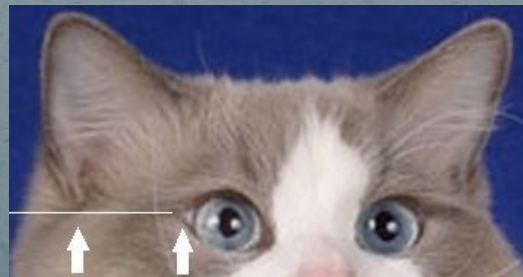


Head: Eyes – 7 points

R
A
G
D
O
L
L

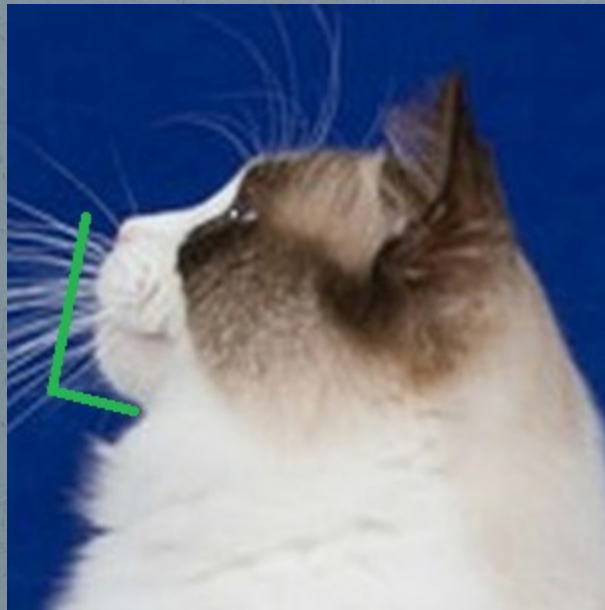
- Blue, Large, Oval
- Moderately wide-set
- Outer aperture to fall in line with the base of the ear

NOTE: As per the TICA UCD, deeper blue is preferred.

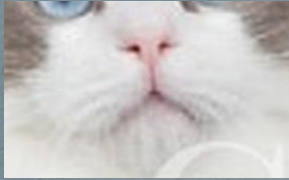


Head: Chin – 5 points

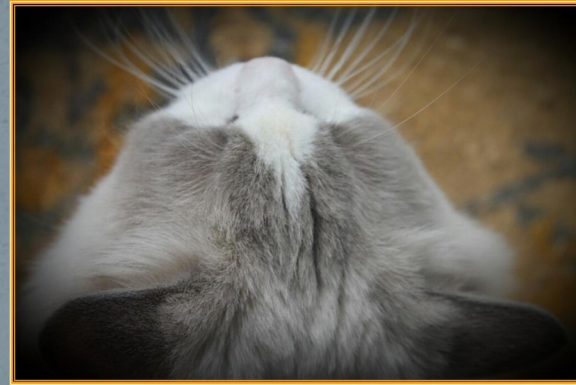
- Well developed
- In line with nose



Head: Muzzle – 4 points



- Rounded
- Medium in length
- In line with wedge



Head: Profile – 9 points



Chin well developed & in line with nose



Straight nose to bridge, followed by change of direction



Gentle curve to brow



Slightly rounded forehead (not domed)



Ears slightly tilted forward



Head: Neck – 1 point

- In proportion to head and torso



R A G D O L L

Body: Torso – 8 points

- Medium-long to long
- Substantial
- Broad chest
- Fat pad on lower abdomen acceptable
- Females may be smaller than males
- Note: Body stretched to full length will determine proper weight to torso relation



Body: Legs/Feet – 5 points

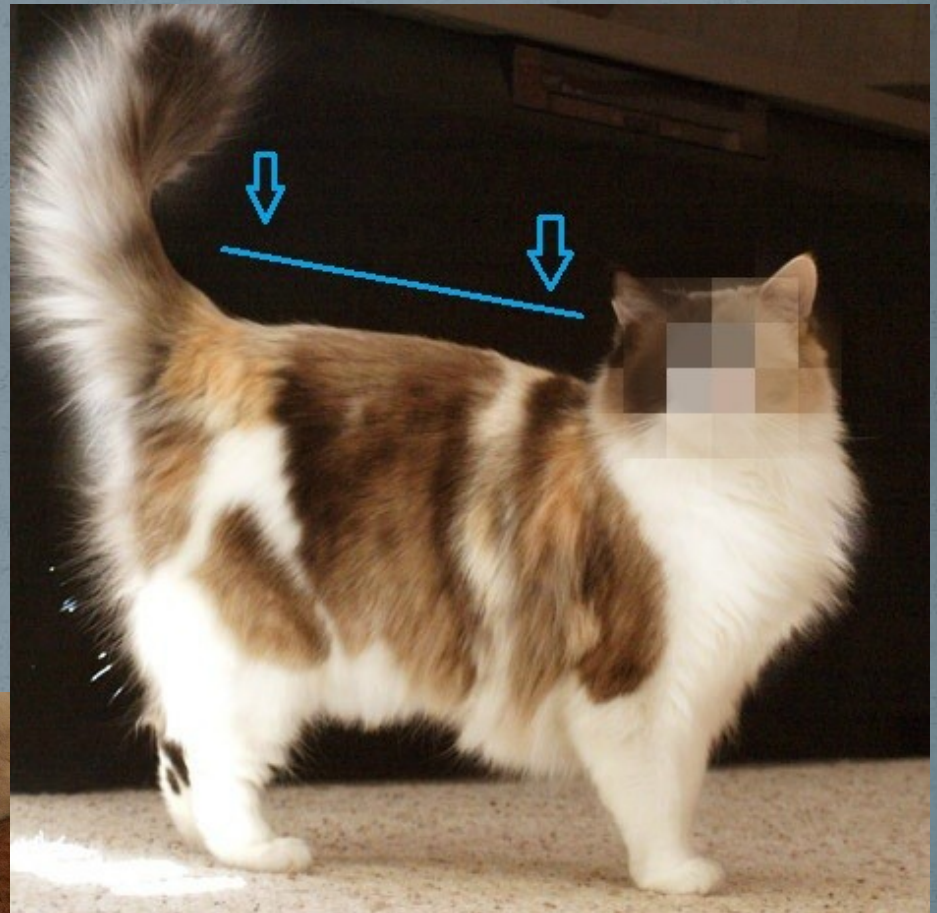
R
A
G
D
O
L
L

Legs:

- Substantial boning
- In proportion to body
- Hind legs slightly longer than front legs

Feet:

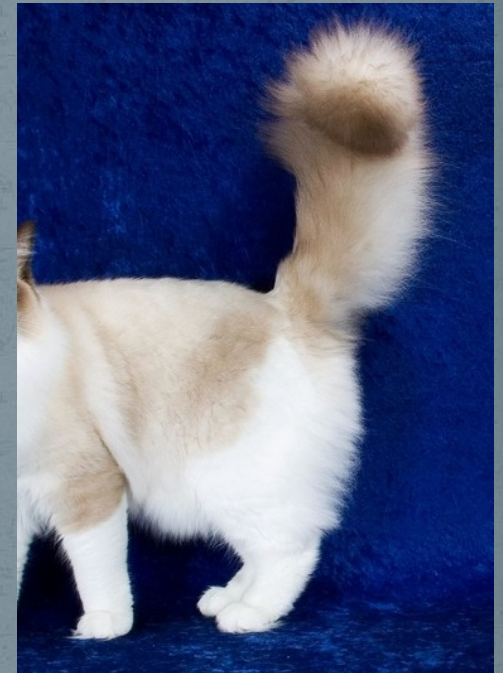
- Large
- Round
- Tufting desirable



R A G D O L L

Body: Tail – 4 points

- Equal to length of body
- Thicker at base, with slight taper



Body: Boning – 10 points

- Substantial

R
A
G
D
O
L
L



R
A
G
D
O
L
L

Body: Musculature – 8 points

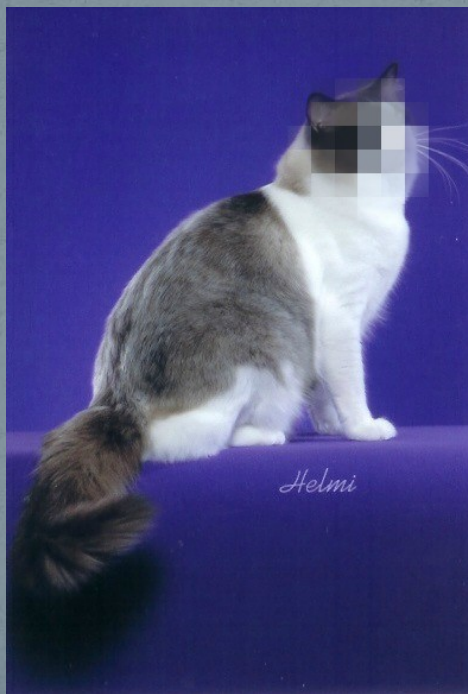
- Well-muscled
- Solid weight



R A G D O L L

Coat: Length – 4 points

- Semi-long
- Allow for shorter coats on unaltered adults and seasonal variations



Coat: Texture – 8 points

- Silky soft
- Plush
- Minimal undercoat gives the coat body but coat still falls smoothly
- Not wooly or cottony
- Note: Correct coat texture requires handling and cannot be properly judged by the eye.



R
A
G
D
O
L
L

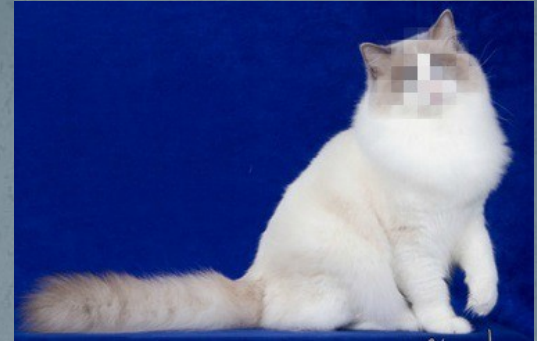
Color – 7 points



Definite contrast between body and point color.



Allow for undeveloped color in young cats.



Even, lighter color on the body with minimal shading.



Allow for darker body color in older cats.

Pattern – 6 points

- Solid Division:

- ❖ Points: Ears, mask, legs, feet & tail to be darker, well defined color
- ❖ Body: Chest bib and chin areas may be somewhat lighter in color
- ❖ Soft shadings of color are allowed

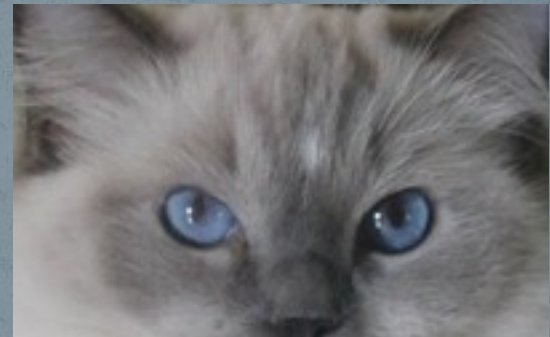
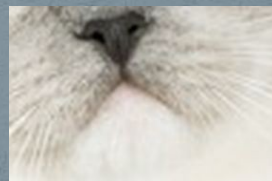


Pattern (continued) – 6 points

R
A
G
D
D
O
L
L

- With White Division: Mitted Pattern

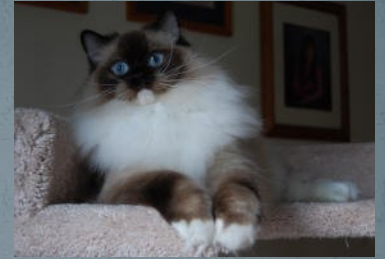
- ❖ Head: May have a broken or evenly matched white blaze on nose and/or between eyes. White not to extend into the inner corner of the eye, nose leather or whisker pads
- ❖ CHIN MUST BE WHITE



Pattern (continued) – 6 points

- With White Division: Mitted Pattern

- ❖ Front Feet: Evenly matched white mittens not to extend above the bend of the paw. All toes to be white
- ❖ Back Legs: White goes up to and around the hocks entirely and extends no higher than mid thigh
- ❖ Body: White stripe extending from chin through chest and length of belly



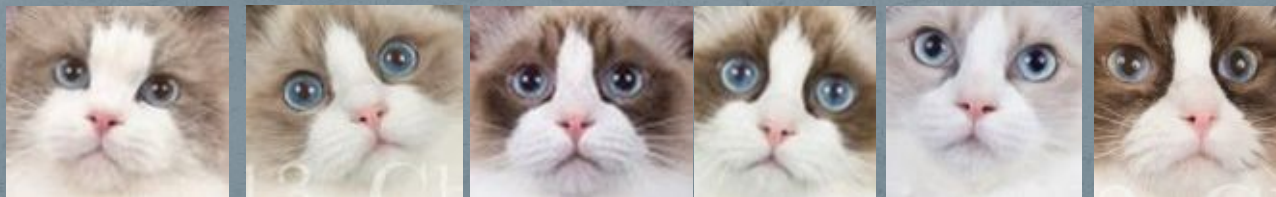
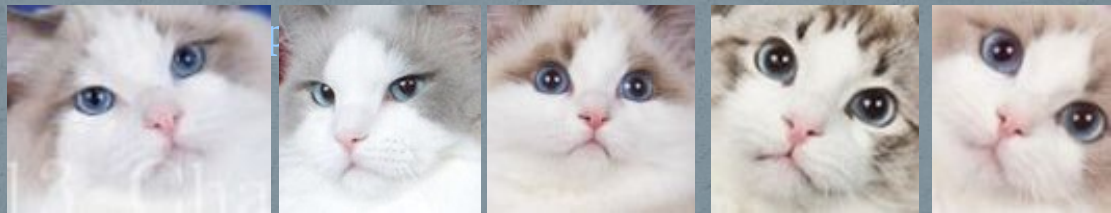
Pattern (continued) – 6 points

R
A
G
D
O
L
L

- With White Division: Bicolor Pattern

- ❖ Head: White inverted “V” on face that completely surrounds the pink nose leather
- ❖ Does not extend beyond the outer edge of the eye on either side
- ❖ The “V” to be as symmetrical as possible
- ❖ White Chin

Most White

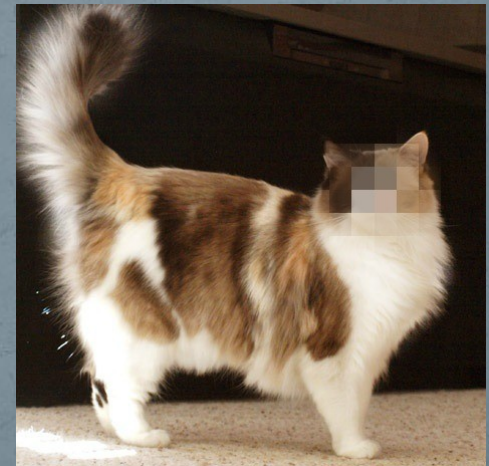


Least White

Pattern (continued) – 6 points

- With White Division: Bicolor Pattern

- ❖ Body: Chest, stomach and ruff are white
- ❖ Saddle may include white or shading in body color
- ❖ Feet & Legs: All white preferred. Small spots of point color allowable
- ❖ Paw Pads: Pink preferred, but mixture of color on paw pads acceptable because of two color in pattern



Penalize:

R
A
G
D
O
L
L

General:

- ❖ Short tail
- ❖ Short legs
- ❖ Cobby body



- ❖ Pointed ears



- ❖ Round eyes



Penalize:

R
A
G
D
O
L
L

General:

❖ Roman nose



❖ Straight profile



❖ Woolly/Cottony coat texture



Penalize:

R
A
G
D
O
L
L

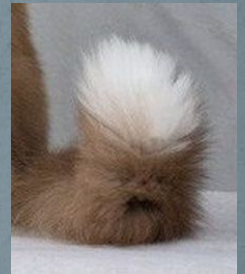
Mitted:

- ❖ Lack of white belly stripe. White on ears and/or tail



❖ Bicolor:

- ❖ White beyond the outside edge of the eye. White on ears and/or tail



Withhold All Awards

R
A
G
D
O
L
L

General:

- ❖ Crossed eyes
- ❖ Any eye color other than blue
- ❖ Pointed: Any white
- ❖ Mitted: Lack of a white chin
- ❖ Bicolor: Any dark markings inside the white “V” including the chin



R
A
G
D
O
L
L



Thank You!